



WORLD'S BEST
ALLOY BULLBARS

East Coast Bullbars (ECB Pty Ltd)

Tel: 07 3897 5700

Fax: 07 3283 1168

ecb@ecb.com.au www.ecb.com.au

29 Snook St
Clontarf QLD 4019
Australia

Po Box 122
Margate QLD 4019
Australia

REPLACES: 26.03.12
REVISED: 16.05.12

BMB49SY

FITTING INSTRUCTIONS

MERCEDES VITO 02/11 ON BIG TUBE BAR VEHICLE FRONTAL PROTECTION SYSTEM (VFPS) FOR AIR BAG & ADR COMPLIANT VEHICLES

Check installation hardware before commencing.

Special tool requirements: T25 and T30 driver bits with driver attachment.

1. Lift bonnet
2. Remove three T25 torx head screws from top of grille. Gently remove grille if removable. On some vehicles, grille is part of bumper.
3. Remove two T25 torx head screws from top of bumper beside headlight, two T25 torx head screws from grille opening (from front on non-removable grille) and two plastic push/pull clips per side from bumper underside into guard liner. Pull guard liner away from bumper to access two T30 torx head screws in bumper wing into guard per side. Slide bumper forward to remove.
4. Remove one 10mm head bolt from air vent under crash can and one T25 torx screw on top of crash can into radiator support, on drivers side only. **See figure 1.**
5. On drivers side: Place ECB steel mount (supplied) behind bumper support to the inside of crash can as high as possible. **See figure 2.** Mark and drill two 10mm holes on the inside of the crash can. At point directly under drilled hole on underside of crash can, drill hole and enlarge to accept 3/8 bolt and washer. Drill second hole on top of crash can at point directly above crash can, and enlarge to accept 3/8 bolt and washer. **See figures 3, 4 and 5. Blow filings clear and treat all exposed metal with a rust inhibitor.** Fit two 3/8 x 1 1/2 bolts on wire, flat washers, spring washers and nuts to pre drilled holes. **Finger tighten only.** Cut off wire tails and crimp onto crash can.
6. On passengers side: Enlarge existing hole in front of crash can to accept 3/8 bolt and washer. **See figure 6.** Place ECB steel mount (supplied) behind bumper support to the inside of crash can as high as possible. Mark and drill two 10mm holes on the inside of the crash can. On top of crash can, drill and enlarge hole to accept 3/8 bolt and washer on wire (as per drivers side). **Blow filings clear and treat all exposed metal with a rust inhibitor.** Fit 3/8 x 1 1/2 bolt on wire, flat washer, spring washer and nut (supplied). Cut off wire tails and crimp onto crash can. **See figure 7.**
7. Measure 90mm from end cap of crash can inside edge across bumper support toward inside of vehicle. Transfer measurement up to inside of opening in front of bumper support. **See figure 8.** Check to see that it is in line with the ECB steel mount hole, centre punch and drill to 10mm. Fit 3/8 x 1 1/2 bolt, flat washer, spring washer and nut (supplied). Align ECB mounts central to vehicle. **Tighten all bolts.**
8. Refit air vent on RH crash can.
9. Splice ECB wiring harness into wiring harness behind headlight using extension wire, wire joiners and cable locks (supplied). Ensure harness is clear of sharp edges and moving parts. Zip tie harness to rear of top finger of mount.
10. Refit bumper and grille in the reverse steps of step 2 and 3.



**WORLD'S BEST
ALLOY BULLBARS**

East Coast Bullbars (ECB Pty Ltd)

Tel: 07 3897 5700

Fax: 07 3283 1168

ecb@ecb.com.au www.ecb.com.au

29 Snook St
Clontarf QLD 4019
Australia

Po Box 122
Margate QLD 4019
Australia

11. Fit ECB LED indicator / park lights into protection bar as per instructions supplied with the LED indicator kit (supplied). **NOTE: Ensure park light is to outside. See figure 9.**
12. Attach 6mm clip lock trim (supplied) to top of ECB protection bar. **NOTE:** Trim off lower edge on an angle so trim will sit flush with end of protection bar. **See figures 10, 11 and 12.**
13. Attach 3mm clip lock trim (supplied) to front of ECB protection bar lower skirt. **NOTE:** Trim off rear edge on an angle so trim will sit flush with end of skirt openings. **See figures 13 and 14.**
14. Fit ECB protection bar outside of ECB steel mounts using four ½ x 1 ½ bolts, flat washer, spring washers and nuts(supplied). **Finger tighten only.**
15. Align ECB protection bar to vehicle. **See figure 15 and 16. Tighten all bolts.**
16. Connect ECB indicator lights. Check for correct operation. Ensure all wiring is attached to rear of ECB protection bar using 150mm zip ties (supplied)

ENSURE NUMBER PLATE IS CLEARLY VISABLE

Note: When fitting/refitting the licence plate to the vehicle, ensure there is no obstruction to licence plate vision in accordance with local authorities. If required relocate licence plate to an alternate location.

Further VFPS Notes:

- a) Do not attach VFPS to the vehicle using anchorages not intended for this purpose (e.g. engine mounting bolts).
- b) Do not use this product for any vehicle make or model, other than those specified by the VFPS manufacturer.
- c) Do not remove the plaque or label from the VFPS.
- d) Do not modify the structure of the VFPS in any way.
- e) No accessory or fitment should project forward of the VFPS forward profile.
- f) **ENSURE THESE INSTRUCTIONS ARE LEFT WITH VEHICLE OWNER AND/OR OPERATOR.**

IMPORTANT INFORMATION

Periodically check bolts and nuts for correct tightness, especially if travelling on rough roads

FITTING KIT

1 – pair ECB Steel mounts	4 – ½ nuts
4 – 3/8 x 1 ½ bolts and washer on 200mm wire	1 – ECB LED Indicator / Park light kit
2 – 3/8 x 1 ½ bolts	2 – 300mm length, 2 core wire
6 – 3/8 flat washers	6 – Cable locks
8 – 3/8 spring washers	4 – auto wire joiner
6 – 3/8 nuts	10 – 150mm zip ties
4 – ½ x 1 ½ bolts	2 – 250mm Lengths 3mm clip lock trim
8 – ½ flat washers	2 - 500 mm Lengths 3mm clip lock trim
4 – ½ spring washers	1 - 2400 mm Lengths 6mm clip lock trim



**WORLD'S BEST
ALLOY BULLBARS**

East Coast Bullbars (ECB Pty Ltd)

Tel: 07 3897 5700

Fax: 07 3283 1168

ecb@ecb.com.au www.ecb.com.au

29 Snook St
Clontarf QLD 4019
Australia

Po Box 122
Margate QLD 4019
Australia

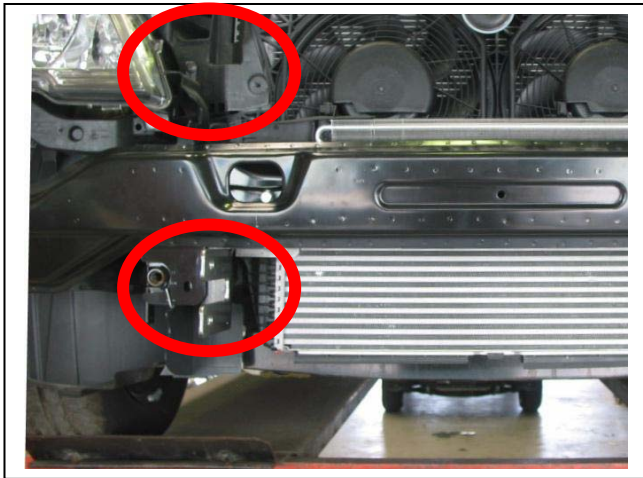


Figure 1: Positioning of air vents to be removed.

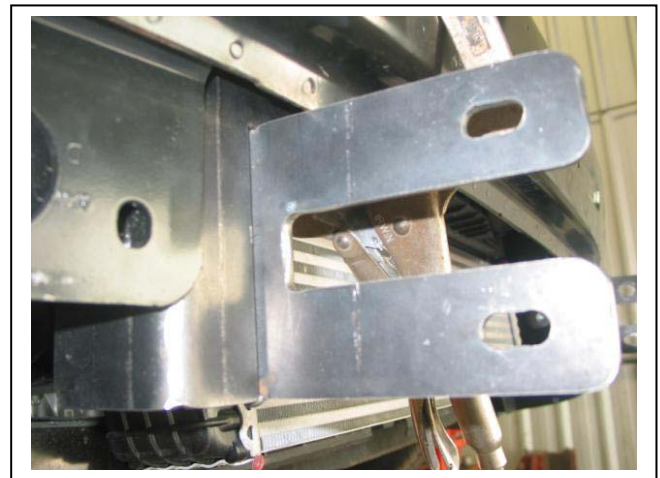


Figure 2: Placement of ECB steel mount. Drivers side shown. Pull forward as far as possible.

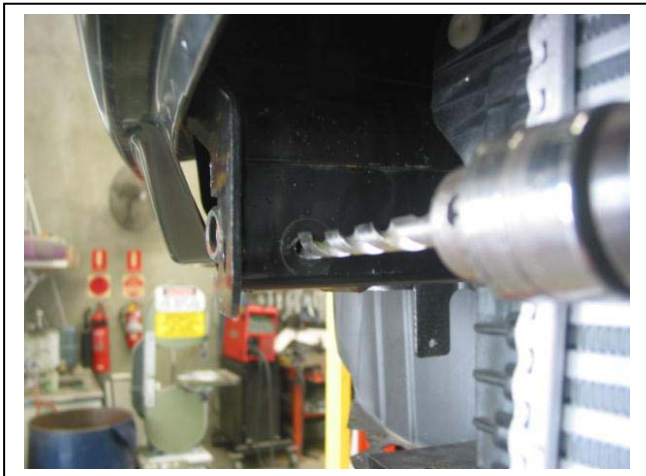


Figure 3: Mark and drill inner crash can to 10mm



Figure 4: Enlarge hole in underside of chassis rail

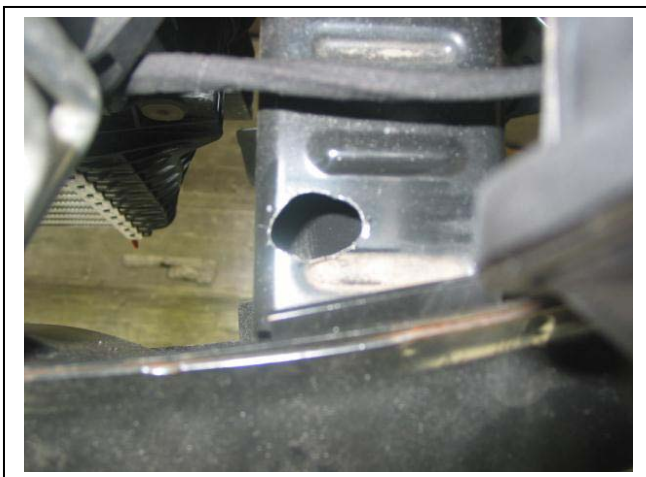


Figure 5: Enlarge hole in top of chassis rail
Passengers side shown

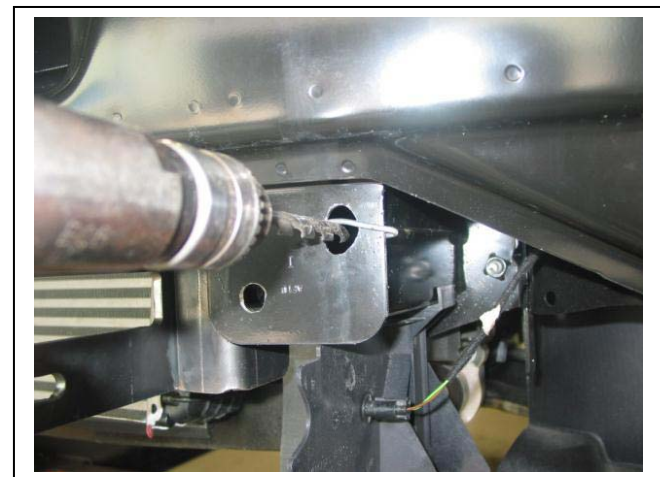


Figure 6: Enlarge hole in front of chassis rail



East Coast Bullbars (ECB Pty Ltd)

Tel: 07 3897 5700

Fax: 07 3283 1168

ecb@ecb.com.au www.ecb.com.au

WORLD'S BEST
ALLOY BULLBARS

29 Snook St
Clontarf QLD 4019
Australia

Po Box 122
Margate QLD 4019
Australia



Figure 7: Cut and crimp wire to side of opening

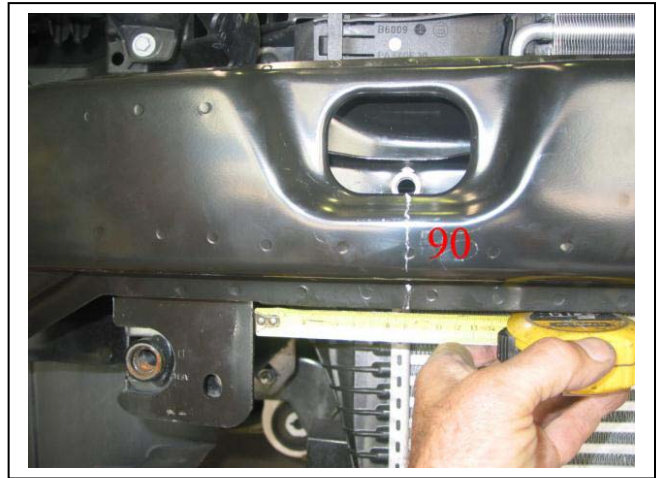
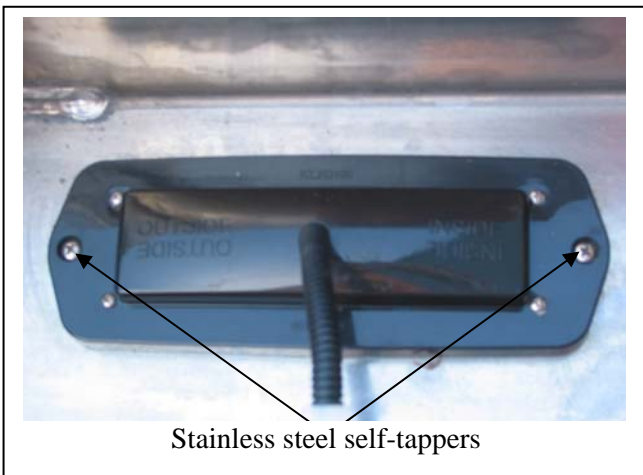


Figure 8: measure to 90mm and project up into opening. **Note:** hole has been drilled in picture.



Stainless steel self-tappers

Figure 9

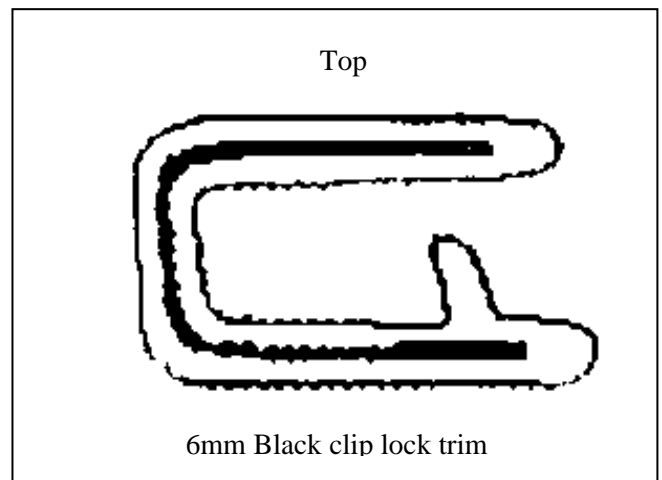


Figure 10

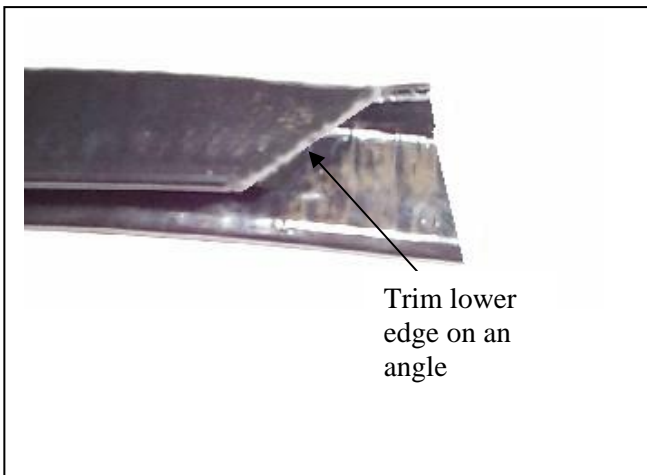


Figure 11

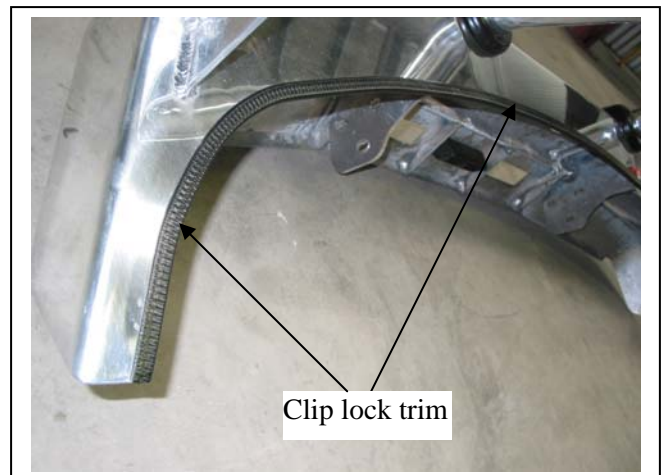


Figure 12



**WORLD'S BEST
ALLOY BULLBARS**

East Coast Bullbars (ECB Pty Ltd)

Tel: 07 3897 5700

Fax: 07 3283 1168

ecb@ecb.com.au www.ecb.com.au

29 Snook St
Clontarf QLD 4019
Australia

Po Box 122
Margate QLD 4019
Australia



Figure 13: 3mm clip lock on centre skirt



Figure 14: 3mm clip lock on end skirt
Drivers side shown (tow hook fitted)



Figure 15: Front view



Figure 16: Side view



**WORLD'S BEST
ALLOY BULLBARS**

East Coast Bullbars (ECB Pty Ltd)

Tel: 07 3897 5700

Fax: 07 3283 1168

ecb@ecb.com.au www.ecb.com.au

29 Snook St
Clontarf QLD 4019
Australia

Po Box 122
Margate QLD 4019
Australia

We value your comments

Dear Fitter,

ECB would like to know how you went with the installation of this product. We value your comment and may need to contact you to clarify some details so please complete your contact details clearly.

We would appreciate if you could complete as many of the following details as possible.

Your Name:	Your contact No.
Product Part No.	Product Invoice No.
Product Description:	Make, model, and year of vehicle:
Product Work Order No.	Company your from/Company product purchased from:

Date of Fitment: ____/____/____

Was the fitting hardware supplied complete? Yes No

If no what was not supplied

Did the installation go well? Yes No

Please provide comments

Please draw diagrams if you need to.

Post to
Reply Paid 122
PO Box 122
Margate QLD 4019

Fax to
(07) 3283 1168



WORLD'S BEST
ALLOY BULLBARS

East Coast Bullbars (ECB Pty Ltd)

Tel: 07 3897 5700

Fax: 07 3283 1168

ecb@ecb.com.au www.ecb.com.au

29 Snook St
Clontarf QLD 4019
Australia

Po Box 122
Margate QLD 4019
Australia

DESPATCH CHECKLIST BMB49SY

Work Order #		See other side of this page for photos of all mounts
Finish:		
Transport:		
Due Date:		

- OC.....1 – Pair Steel mounting Brackets
- BK.....1 – Bolt Kit.
- BK.....1 – LED ECB indicator / park light kit.
- BK.....2 – 250mm lengths 3mm clip lock trim
- BK.....2 – 500mm lengths 3mm clip lock trim
- BK.....1 – 2400mm length 6mm clip lock trim
- OC.....2 – ECB Overrides – **Fitted to Bar**



Is this product “the best it can be” Yes _____ / _____
Wrapper's initials / Checker initials

If **NO** fix before continuing

All parts checked and completed by:

Nut and bolts: _____ Date __/__/__

Order control: _____ Date __/__/__

Final wrap check: _____ Date __/__/__



WORLD'S BEST
ALLOY BULLBARS

East Coast Bullbars (ECB Pty Ltd)

Tel: 07 3897 5700

Fax: 07 3283 1168

ecb@ecb.com.au www.ecb.com.au

29 Snook St
Clontarf QLD 4019
Australia

Po Box 122
Margate QLD 4019
Australia

